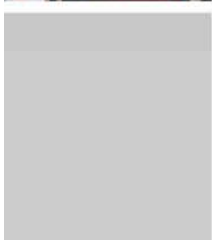
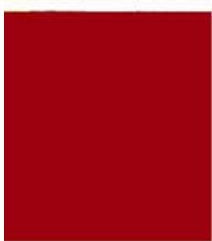




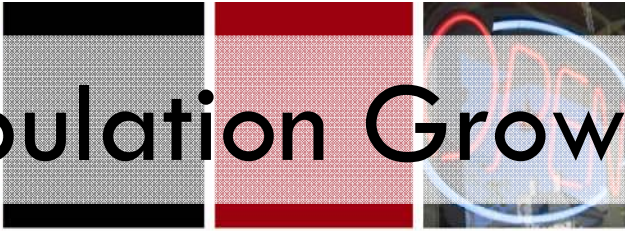
Louisiana Technical College- Crowley
Gregg Gothreaux
March 19, 2009



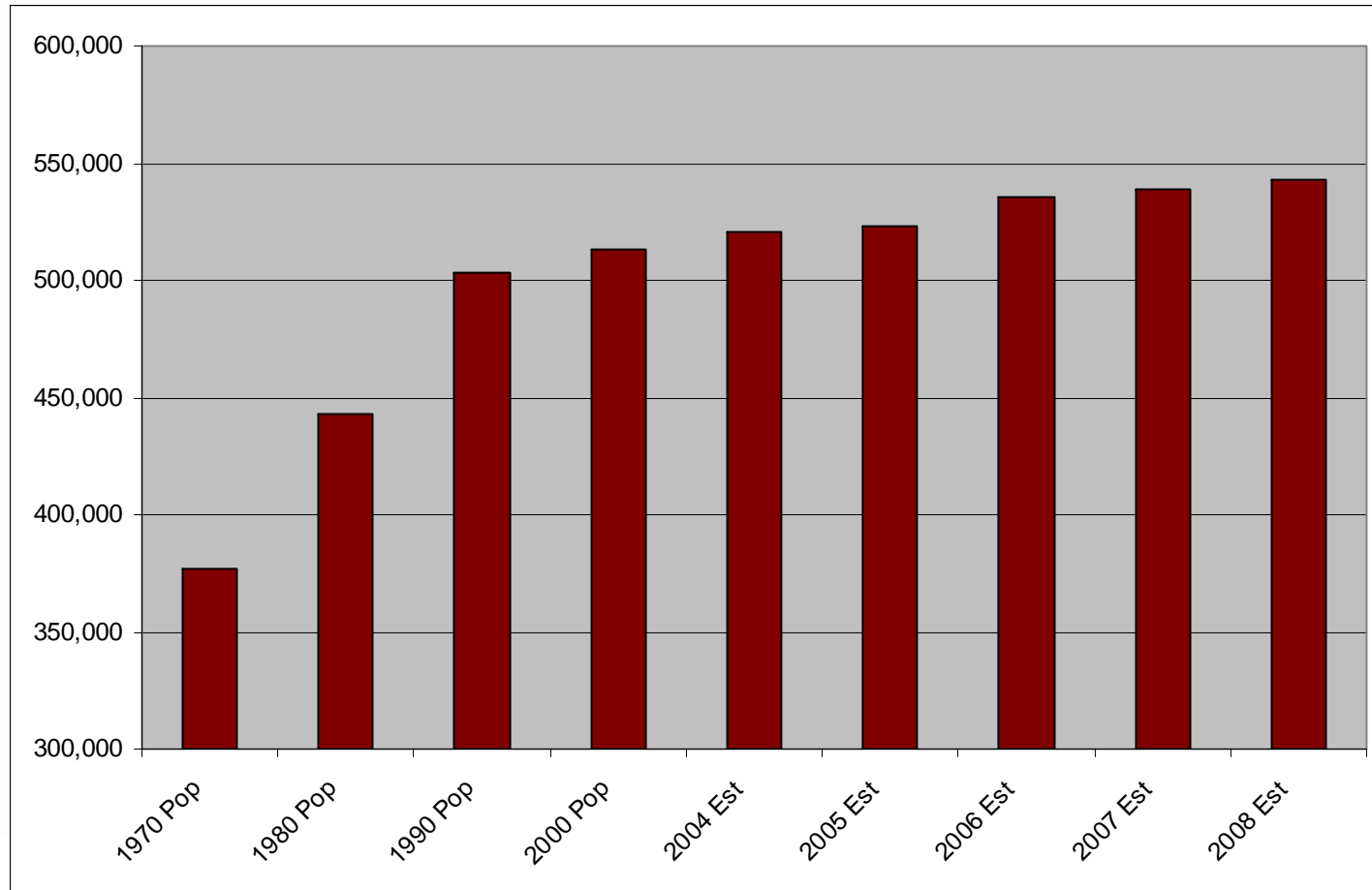
- Best Cities – The Lafayette MSA was ranked 14th Best Performing (Large Metro) City in the nation citing job growth, salary growth, and high-tech GDP growth as key indicators. Up from 143rd in 2005 and 24th in 2006. Source: Milken Institute/Greenstreet Real Estate Partners, September 2008
- Best Places for Doing Business – Lafayette was named the 42nd best city in the nation for doing business based on job creation, job center diversity, and other business concerns. Among other cities of its size, Lafayette ranked 10th. Source: Inc. Magazine, July 2008
- Innovation Market – Lafayette was named one of the “Top 10 Great Innovation Markets in the South” for its efforts in nurturing and attracting innovation-driven industry and business. Source: Southern Business & Development Magazine, April 2008
- Best Places for Business and Careers – Lafayette’s Cost of Doing Business ranks 32nd lowest and Job Growth ranks in the top 50 among the largest 200 US metro areas. Source: Forbes Magazine, March 2008
- Creative Cities – Lafayette was named one of the 10 “Best Places Cities in the South for the Creative Class.” Source: Southern Business & Development Magazine, April 2007



Population Growth



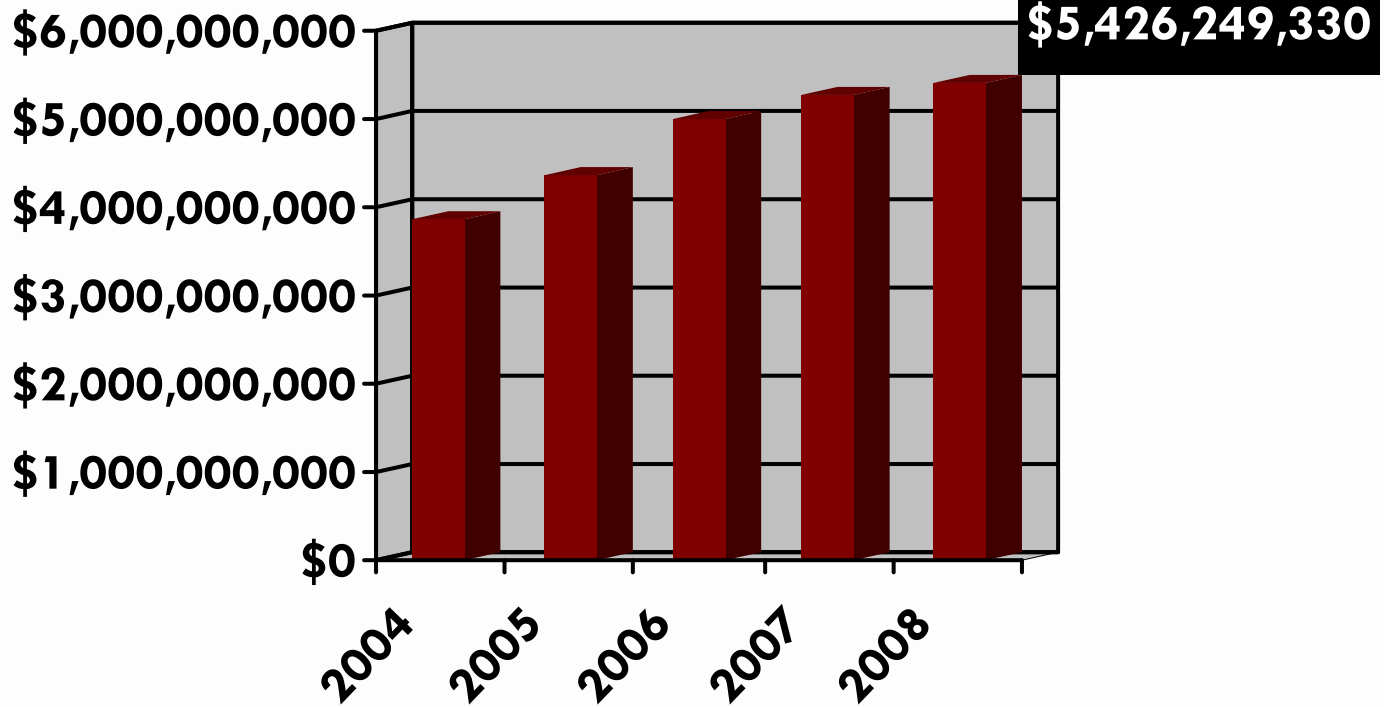
Six-Parish Acadiana



Source: Census 1970-2007, Claritas 2008



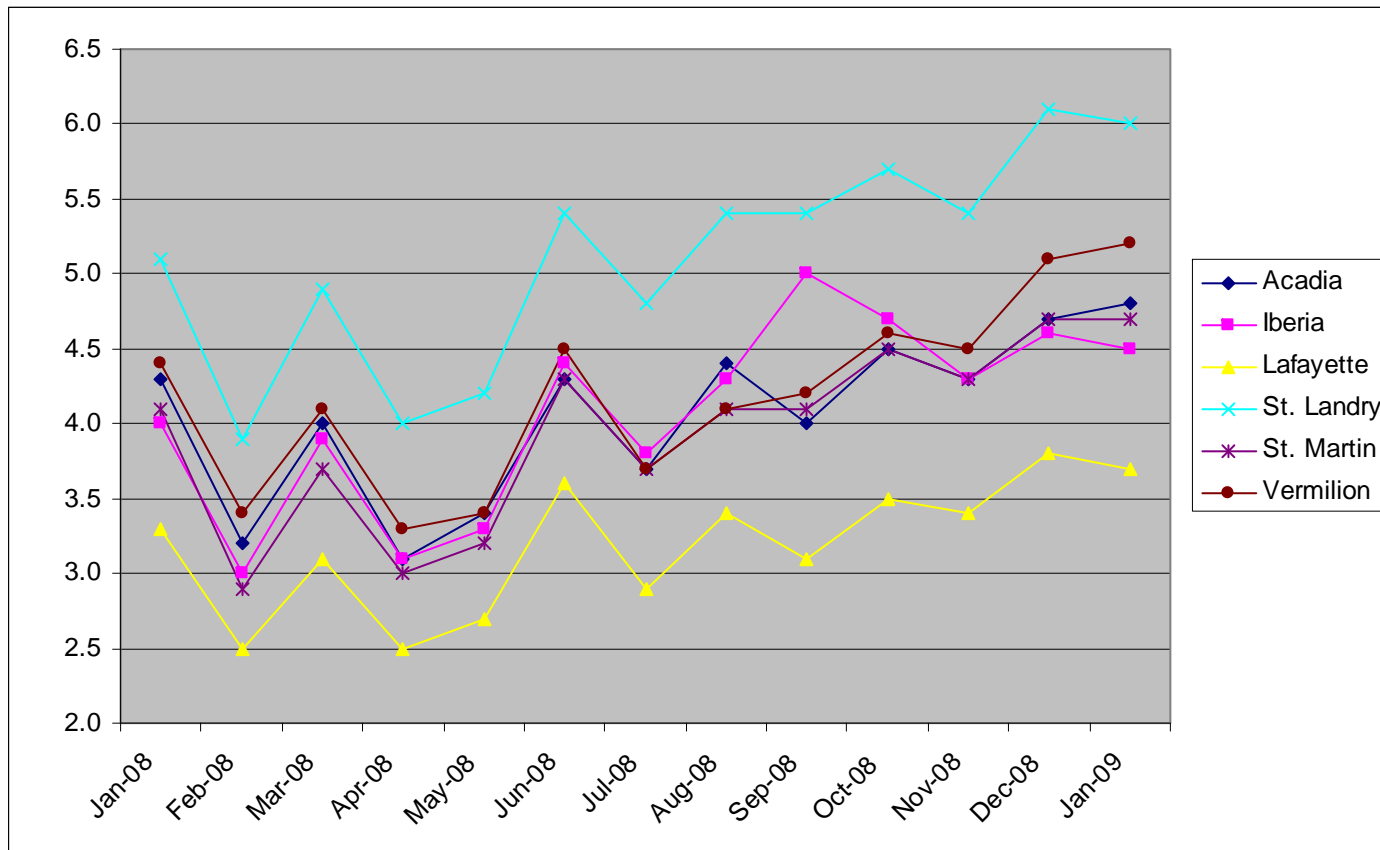
Retail Sales



Lafayette's total annual retail sales in 2008 were more than \$5 billion for the third year in a row.

Source: Lafayette Parish School Board
Note: 2008 annual total is \$157,655,803 more than the 2007 annual total.

Unemployment



Source: Louisiana Workforce Commission

Employment by Sector

Industry	Region 4 % of Total	Louisiana % of total	U.S. % of Total
Mining	9.3%	2.7%	.55%
Construction	6.3%	7.6%	5.3%
Manufacturing	8.9%	8.1%	9.8%
Transportation	5.0%	5.0%	3.3%
Wholesale trade	4.6%	4.0%	4.8%
Retail trade	12.2%	11.9%	11.0%
Information	1.7%	1.8%	2.2%
F.I.RE	5.4%	4.9%	6.0%
Health care	13.6%	14.4%	11.4%
Leisure/Hospitality	9.5%	9.0%	10.1%
Services	19.7%	14.6%	19.3%

Source: Louisiana Workforce Commission

Note: 19.9% of Region 4 workforce is employed in wealth-creating industries; LA- 12.6%; U.S. 12.6%



Demand Occupation

Truck Drivers- heavy and tractor trailer

- 2007 employment estimate: 4,150
- Annual % growth: 1.7%
- Average hourly wage: \$14.89
- 15th ranked for Occupation Adding the Most Jobs: 150 jobs/year



Find Your Niche

The transportation industry reaches across all business sectors, securing its place in Acadiana's economy.

By taking advantage of training programs at LTC and utilizing state training grant programs such as SBET and IWTP, you can increase your employees proficiency and skills...increasing the overall success of your business.