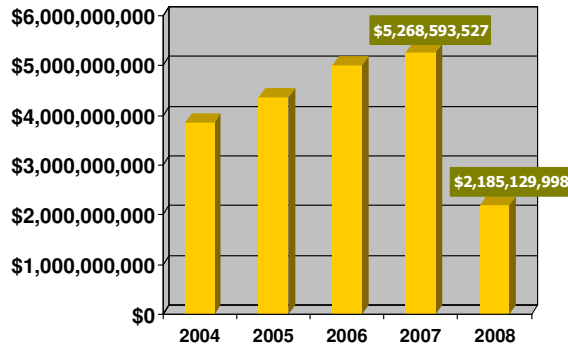


Retail Sales



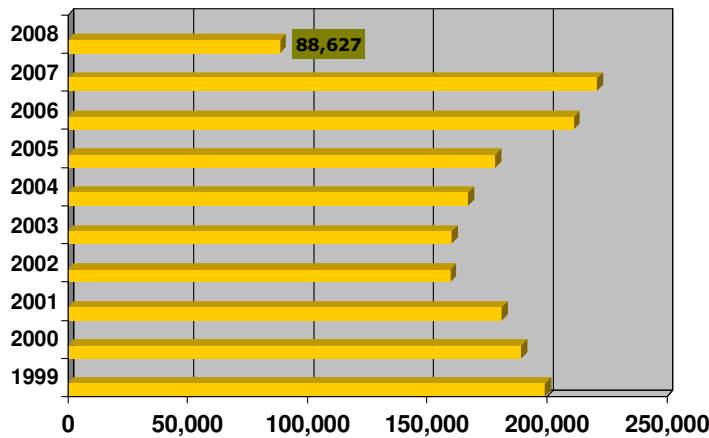
Lafayette Parish



Lafayette's total annual retail sales were more than \$5 billion for 2007. 2007 total retail sales were 5.35% greater than 2006.

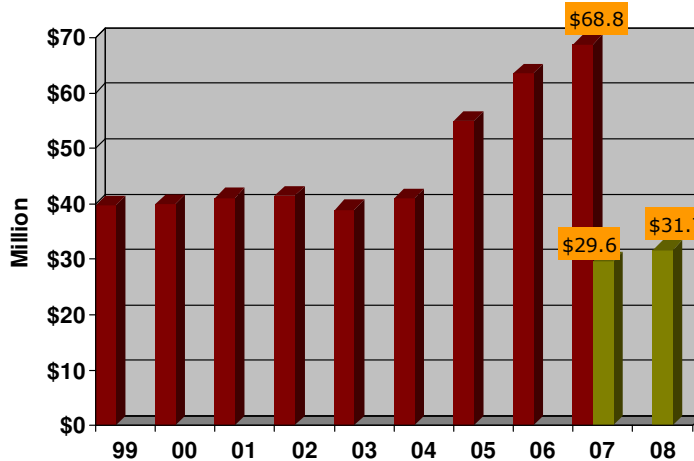
Source: Lafayette Parish School Board
 Notes: The total for 2008 through May is \$108,174,675 more than the 2007 total through May.

Annual Airline Boardings



Source: Lafayette Regional Airport
 Note: The total for 2008 through May is 1,244 less than the total through May for 2007.

Hotel & Motel Receipts



Source: Lafayette Parish School Board.
 Note: 2008 total through May is \$2,105,627 more than the 2007 total through May.
 Hotel/Motel tax is collected at a rate of 4%

1985 Employment Sectors



Industry	1985 LAF	1985 LA	1985 US
Mining	17.0%	5.1%	0.95%
Construction	5.4%	6.6%	4.8%
Manufacturing	6.4%	11.2%	19.8%
Transportation	7.4%	7.3%	5.4%
Wholesale trade	6.6%	5.8%	5.9%
Retail trade	19.4%	18.3%	17.8%
Information	n/a	n/a	n/a
F.I.RE*	4.3%	5.3%	6.1%
Health Care	n/a	n/a	n/a
Leisure/Hosp.	n/a	n/a	n/a
Services	20.4%	20.1%	22.5%
Government	13.3%	20.2%	16.8%

Source: Louisiana Department of Labor. The data represents annual averages.
 Note: 23.4% of the workforce in the Lafayette MSA is a combination of Mining and Manufacturing.
 *F.I.RE represents Finance, Insurance and Real Estate

2008 Employment Sectors



Industry	2008 LAF	2008 LA	2008 US
Mining	10.9%	2.6%	0.56%
Manufacturing	7.0%	8.1%	9.8%
Construction	4.7%	7.2%	5.4%
Transportation	2.6%	4.2%	3.3%
Wholesale trade	4.9%	3.9%	4.8%
Retail trade	11.4%	11.6%	11.0%
Information	2.3%	1.4%	2.2%
F.I.RE*	6.2%	5.0%	6.0%
Health Care	12.9%	11.4%	11.4%
Leisure/Hosp.	10.1%	10.4%	10.3%
Services	16.0%	15.6%	19.1%
Government	11.0%	18.7%	16.2%

Source: Louisiana Department of Labor. The data is representative of June.
 Note: 17.9% of the workforce in the Lafayette MSA is a combination of Mining and Manufacturing.
 *F.I.RE represents Finance, Insurance and Real Estate

Unemployment



Lafayette Parish (county) saw record-low unemployment rates of less than 3% eight times in the last twelve months.



Month	Unemployment Rate
July	2.9%
August	3.0%
September	2.9%
October	2.1%
November	2.2%
December	2.5%
January	3.3%
February	2.5%
March	3.1%
April	2.5%
May	2.7%
June	3.6%

Source: Louisiana Department of Labor
 June 2007 unemployment rate = 3.4%

Cost of Labor



Lafayette offers high quality, competitive labor cost.

Occupation	Lafayette	Houston	Atlanta	Jackson	San Antonio
Accountant	\$43,662	\$50,116	\$48,407	\$43,368	\$44,887
Carpenter	\$35,598	\$40,856	\$39,759	\$35,624	\$36,712
Construction Worker	\$29,556	\$33,879	\$33,249	\$29,803	\$30,537
Electrical Engineer	\$76,304	\$85,827	\$82,567	\$74,618	\$78,194
Office Manager	\$42,848	\$49,227	\$47,569	\$42,608	\$44,120
Registered Nurse	\$54,480	\$61,951	\$59,727	\$53,724	\$55,925
Sales Representative	\$41,215	\$47,341	\$45,810	\$41,035	\$42,452
Teacher - Primary	\$42,052	\$48,308	\$46,712	\$41,842	\$43,307
Teacher - Secondary	\$45,871	\$52,532	\$50,718	\$45,482	\$47,141
Welder	\$33,845	\$38,832	\$37,870	\$33,935	\$34,920

Source: ERI Economic Research Institute. [The 2008 Geographic Reference Report](#).
Data represents wage/salary estimates through December 31, 2007.
Data represents the Lafayette MSA.

Cost of Labor Comparison



Lafayette MSA

Occupation	2003	2004	2005	2006	2007
Accountant	\$42,737	\$40,948	\$42,674	\$43,249	\$43,662
Carpenter	\$29,647	\$29,410	\$30,896	\$33,801	\$35,598
Construction Worker	\$30,163	\$31,612	\$30,230	\$29,806	\$29,556
Electrical Engineer	\$65,439	\$62,977	\$64,474	\$71,322	\$76,304
Office Manager	\$42,941	\$41,154	\$39,724	\$40,238	\$42,848
Registered Nurse	\$44,872	\$46,901	\$49,197	\$52,249	\$54,480
Sales Representative	\$45,201	\$43,361	\$42,078	\$41,535	\$41,215
Teacher - Primary	\$38,681	\$40,614	\$40,194	\$40,754	\$42,052
Teacher - Secondary	\$39,521	\$30,607	\$43,057	\$44,814	\$45,871
Welder	\$31,300	\$28,959	\$32,809	\$33,716	\$33,845

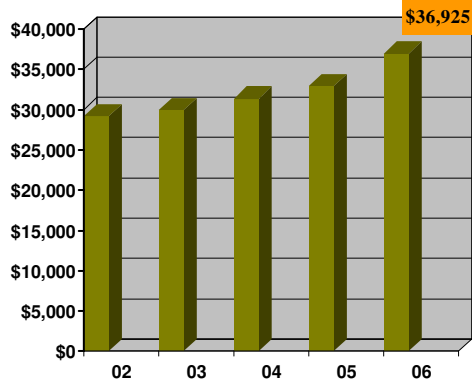
Source: ERI Economic Research Institute [2004 - 2008 Geographic Reference Reports](#).
Data represents wage/salary estimates through December 31st, of each year.
Data represents the Lafayette MSA.

Per Capita Income



Lafayette Parish

3rd Highest in the State



1. St. Bernard
2. Orleans
3. **Lafayette**
4. Jefferson
5. St. Tammany

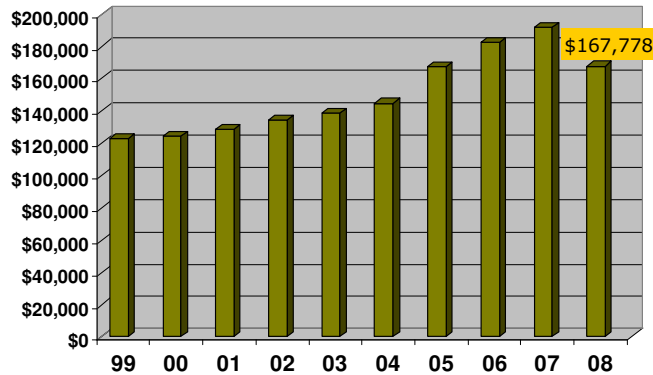
Top 9% of all counties in the US
(276 out of 3111 counties)

Source: Bureau of Economic Analysis
Note: Lafayette's PCI increased 84% in the last 10 years, LA up 61% and US up by 52%.

Average Annual Sales Price

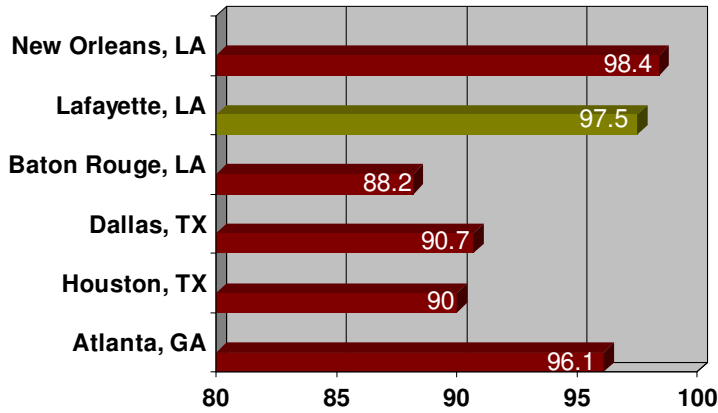


For A Single Family Residential Home



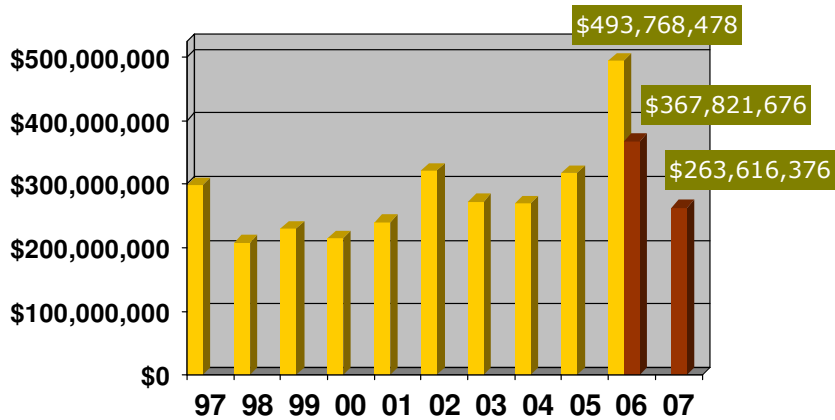
Source: Lafayette Board of Realtors
Note: The average for 2008 through June is \$22,549 less than the average for 2007.

Cost of Living



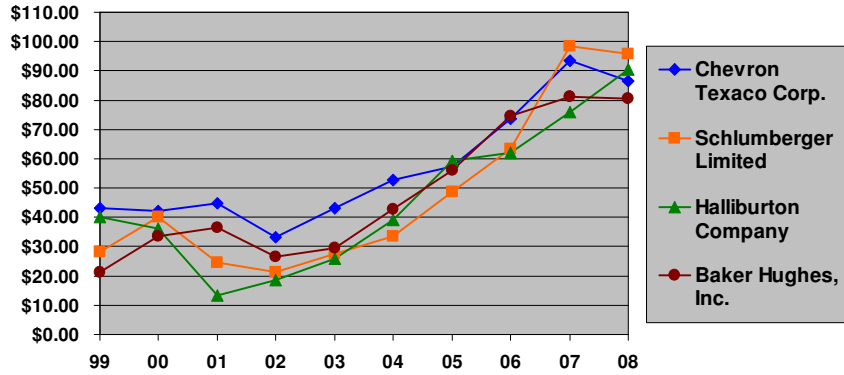
Source: ACCRA Cost of Living Index; 2nd Quarter 2008
 Note: Data represents Lafayette Parish.
 Data is based on an index where 100 is the national average.

Construction Valuation



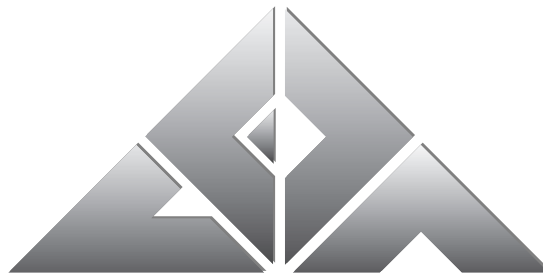
Source: Lafayette Parish Codes Division
 Note: Information is based on the Lafayette Consolidated Government's fiscal year ending October 31st.
 The total for the first 50 weeks of the 2007-08 fiscal year is \$104,205,300 less than the first 50-week total for the 2006-2007 fiscal year.

Year End Stock Price for Selected Oilfield Companies



Source: Bigcharts.com
 Note: 2008 data represents closing stock prices as of August 20, 2008
Split History:
 Chevron Texaco, 2:1 split in August of 2004, merger with Unocal August 2005
 Schlumberger, 2:1 split in June of 1997, 2:1 split April 10, 2006
 Halliburton, 2:1 split in July of 1997, 2:1 split in June 06

Contact Us



**211 East Devalcourt Street
 Lafayette, LA 70506-1421
 337-593-1400
 Fax 337-234-3009
www.lafayette.org**

**To view this presentation online,
 visit
www.lafayette.org/presentations**