



University of Louisiana - Lafayette

SCHOOL OF ARCHITECTURE AND DESIGN

COMMUNITY DESIGN WORKSHOP

**REENVISIONING
THE OIL CENTER**

Girard
Park

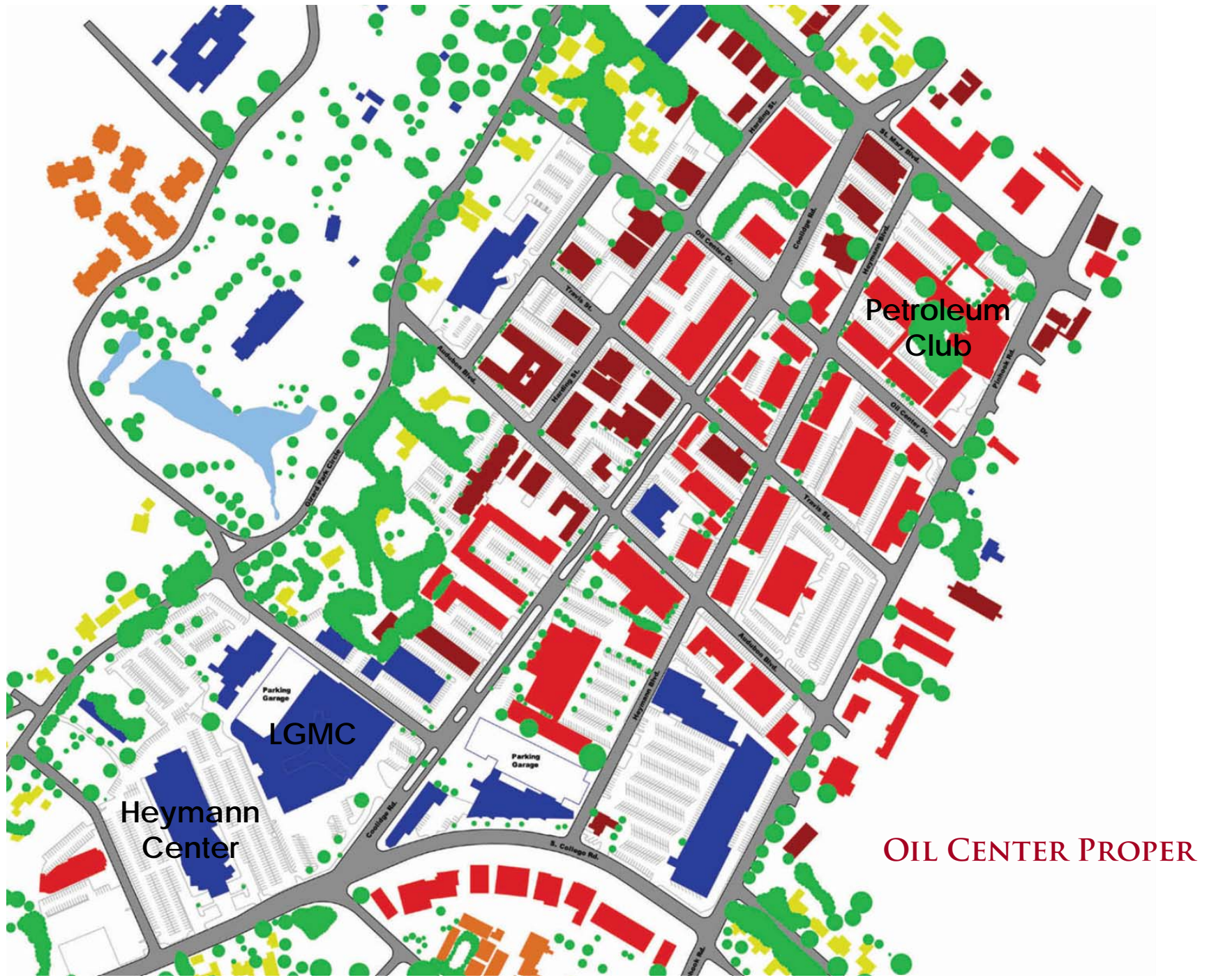
Petroleum
Club

LGMC
Heyman
Center

Champagnes



CURRENT PLAN



Petroleum Club

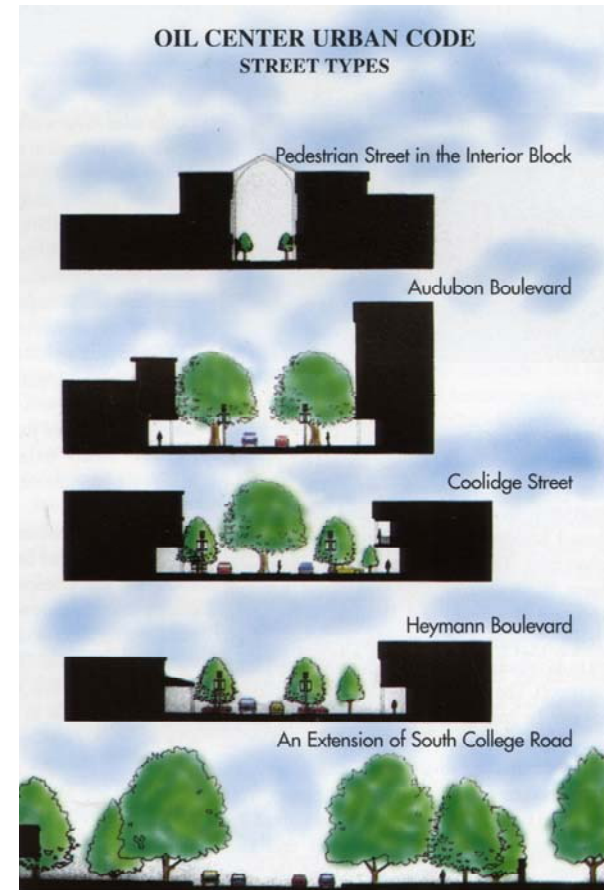
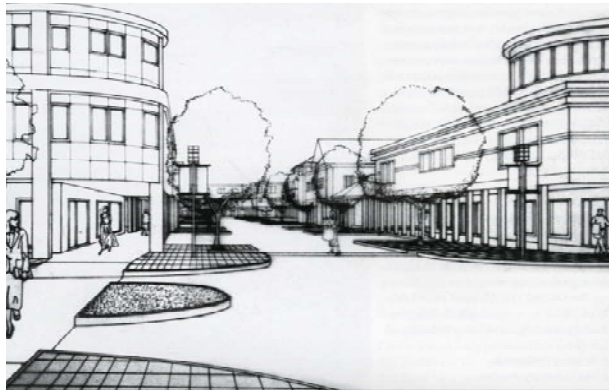
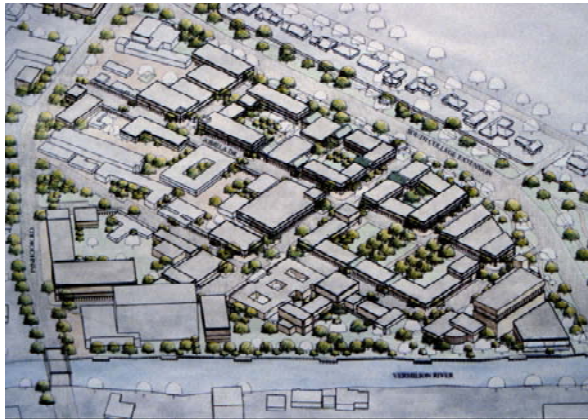
LGMC

Heymann Center

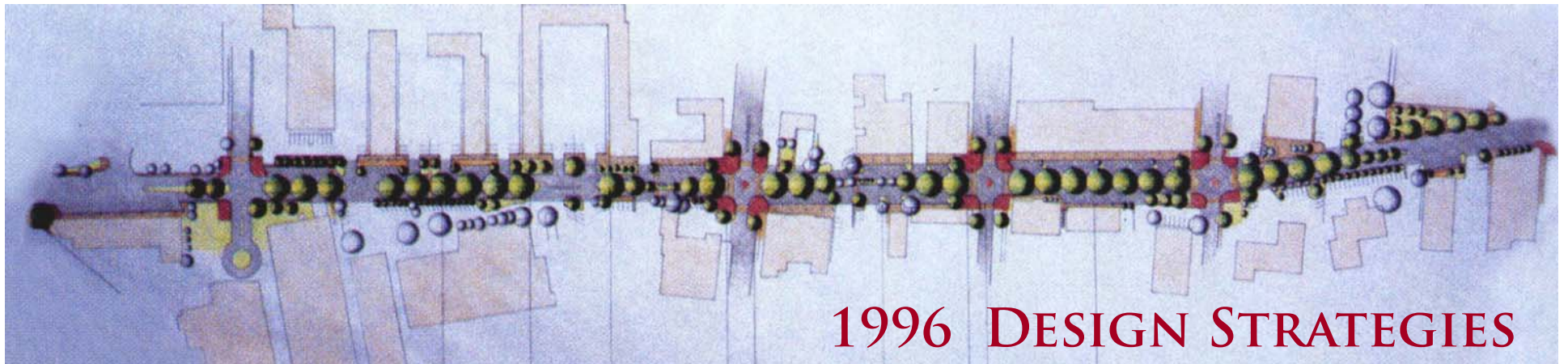
OIL CENTER PROPER



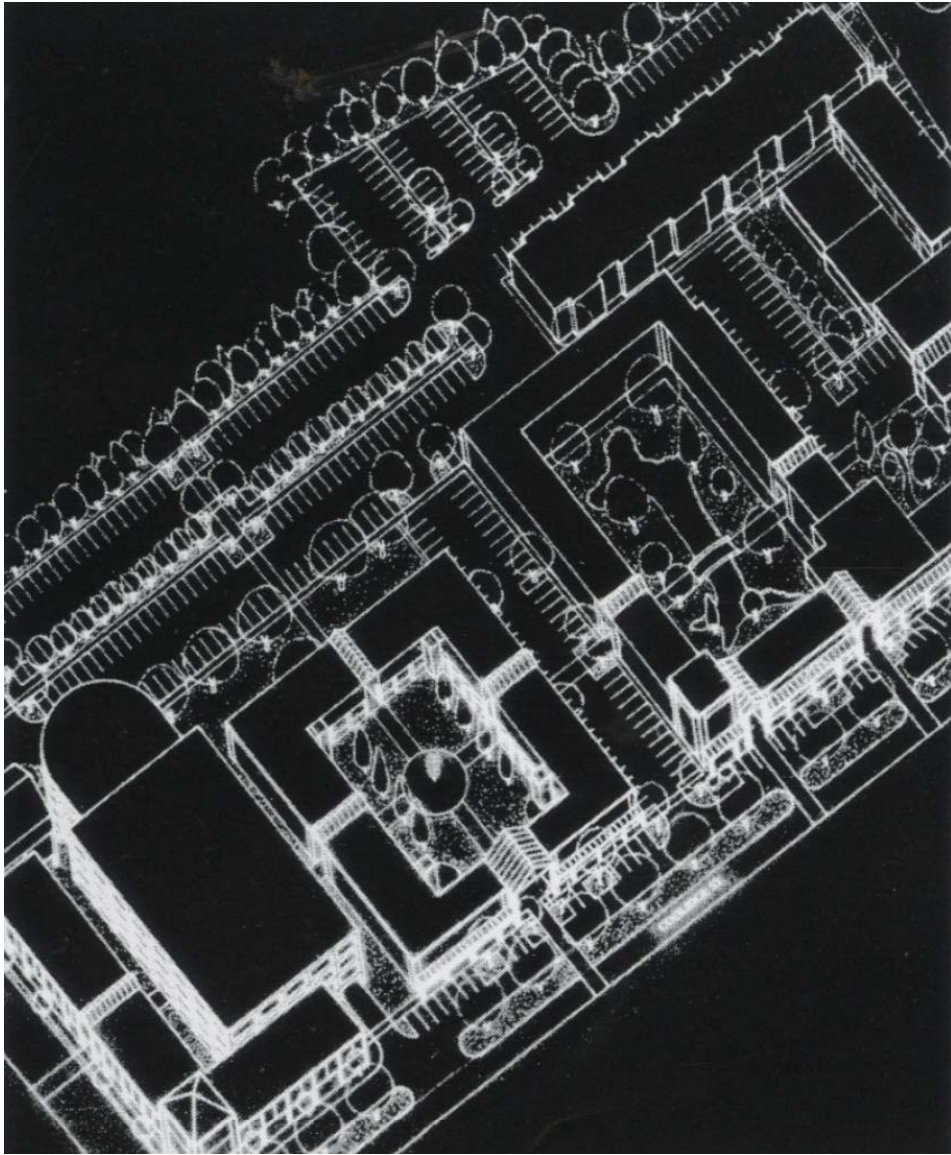
1996 AERIAL



COOLIDGE RD. STREETScape

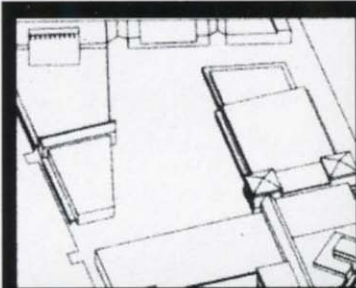


1996 DESIGN STRATEGIES

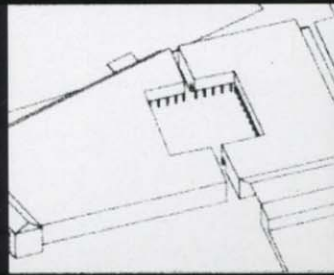


- Parking placed off street.
- Parking placed around infrastructure.
- Parking placed behind buildings.

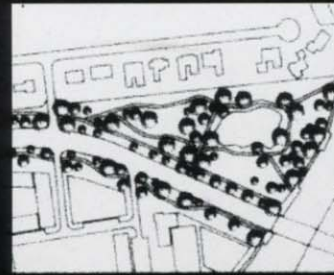
USL COMMUNITY DESIGN WORKSHOP
URBAN CODE



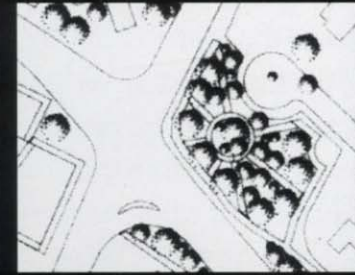
URBAN SPACE



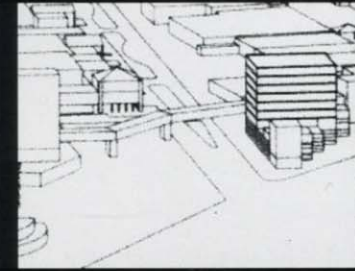
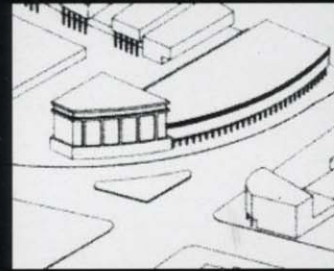
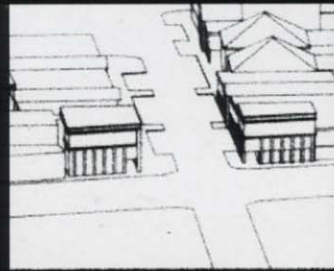
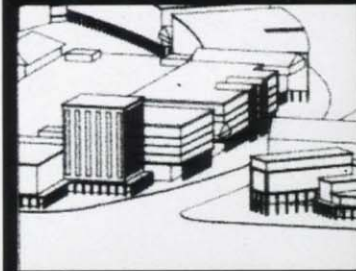
PUBLIC SPACE



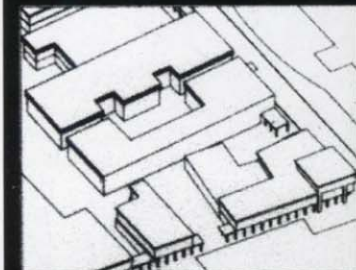
LINEAR PARK



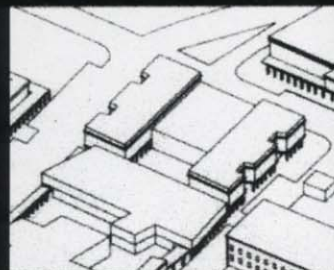
POCKET PARK



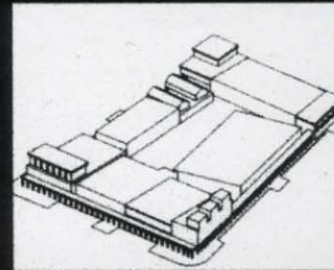
URBAN GATES



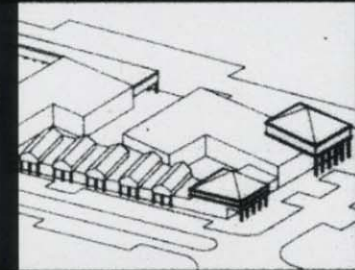
URBAN INFILL



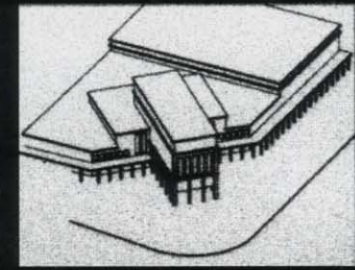
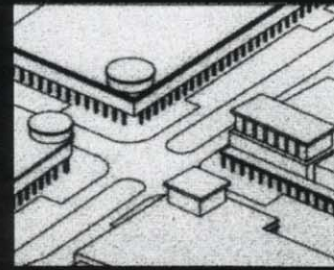
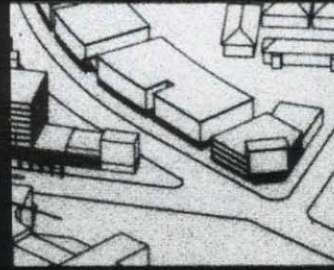
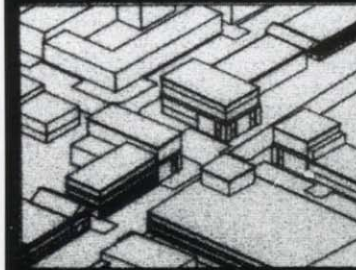
UPPER LEVEL INFILL



SPOT INFILL



WRAPPING



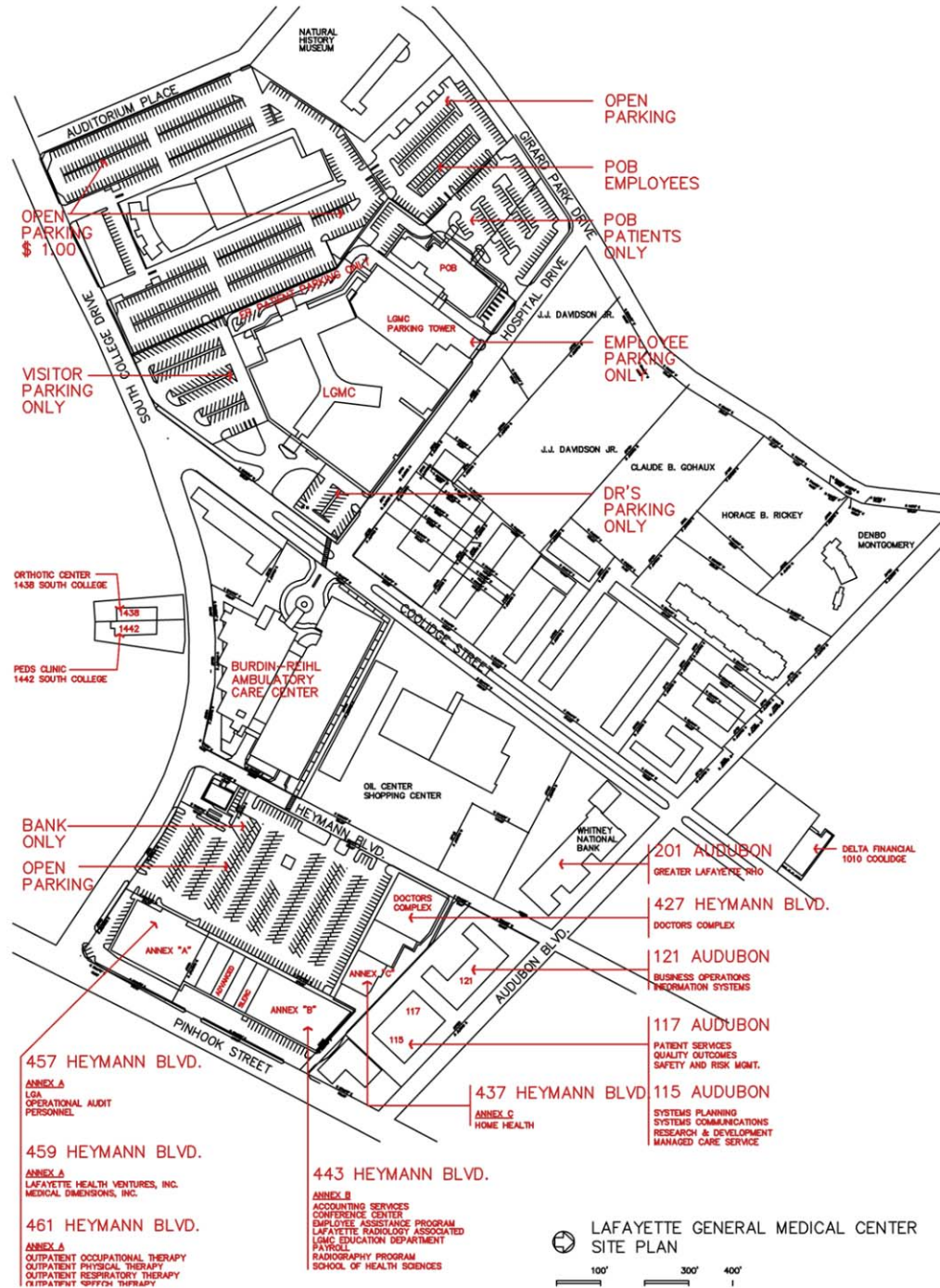
THE CORNER

SMART GROWTH PRINCIPLES

Smart Growth: planning, regulatory, and development practices that promote a set of principles concerning the form and character of development and redevelopment

1. Mix land uses.
2. Take advantage of compact building design.
3. Create a range of housing opportunities and choices.
4. Create walk-able communities.
5. Foster distinctive, attractive communities with a strong sense of place.
6. Preserve open spaces, the natural beauty of farmlands, and critical environmental areas.
7. Strengthen and direct development toward existing communities.
8. Provide a variety of transportation choices.
9. Make development decisions predictable, fair, and cost-effective.
10. Encourage community and stakeholder collaboration in development decisions.

LGMC SITE AND PARKING LAYOUT



BEGINNING THE PROCESS...

- How do we evolve and develop the existing infrastructure of the Oil Center?
- How do we increase mixed-use of residential and commercial?
- What are the hospital's plans for expansion?
- How do we improve the parking situation?
- How do we make the Oil Center a more green and walk-able district?
- How do we create an Oil Center that is more integrated into the fabric of Lafayette? More connected to the university?