

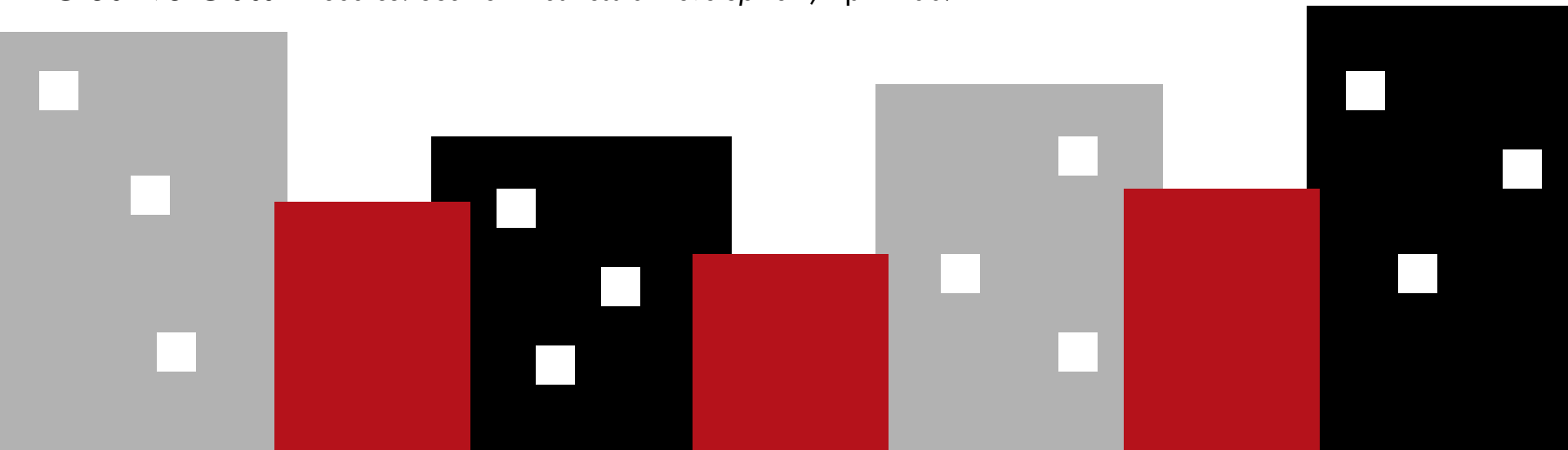
LAFAYETTE  
*Louisiana*

# Extra, Extra!

**Best Places for Doing Business** – Lafayette was named the 42nd best city in the nation for doing business based on current, mid-term and long-term employment growth rates. Among other cities of its size, Lafayette ranked 10th. *Source: Inc. Magazine, July 2008*

**Best Places for Business and Careers** – Lafayette’s Cost of Doing Business ranks 32nd lowest and Job Growth ranks in the top 50 among the largest 200 US metro areas. *Source: Forbes Magazine, March 2008*

**Creative Cities** – Lafayette was named one of the 10 “Best Cities in the South for the Creative Class.” *Source: Southern Business & Development, April 2007*



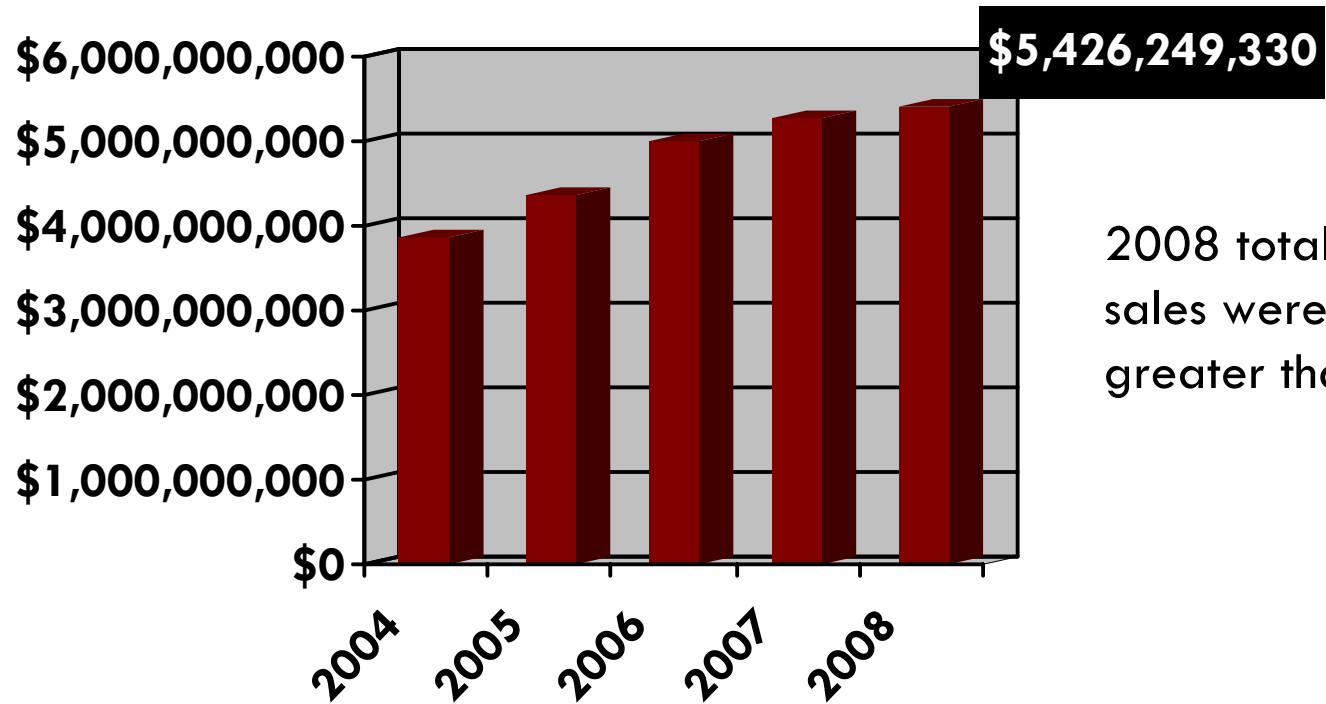
# Extra, Extra!

**Innovation Market** – Lafayette was named one of the “Top 10 Great Innovation Markets in the South” for its efforts in nurturing and attracting innovation-driven industry and business. Source: *Southern Business & Development*, April 2008

**Best Cities** – The Lafayette MSA was ranked 14th Best Performing (Large Metro) City in the nation citing job growth, salary growth and high-tech GDP growth as key indicators. Up from 143rd in 2005 and 24th in 2006. Source: *Milken Institute / Greenstreet Real Estate Partners*, September 2008



# Retail Sales



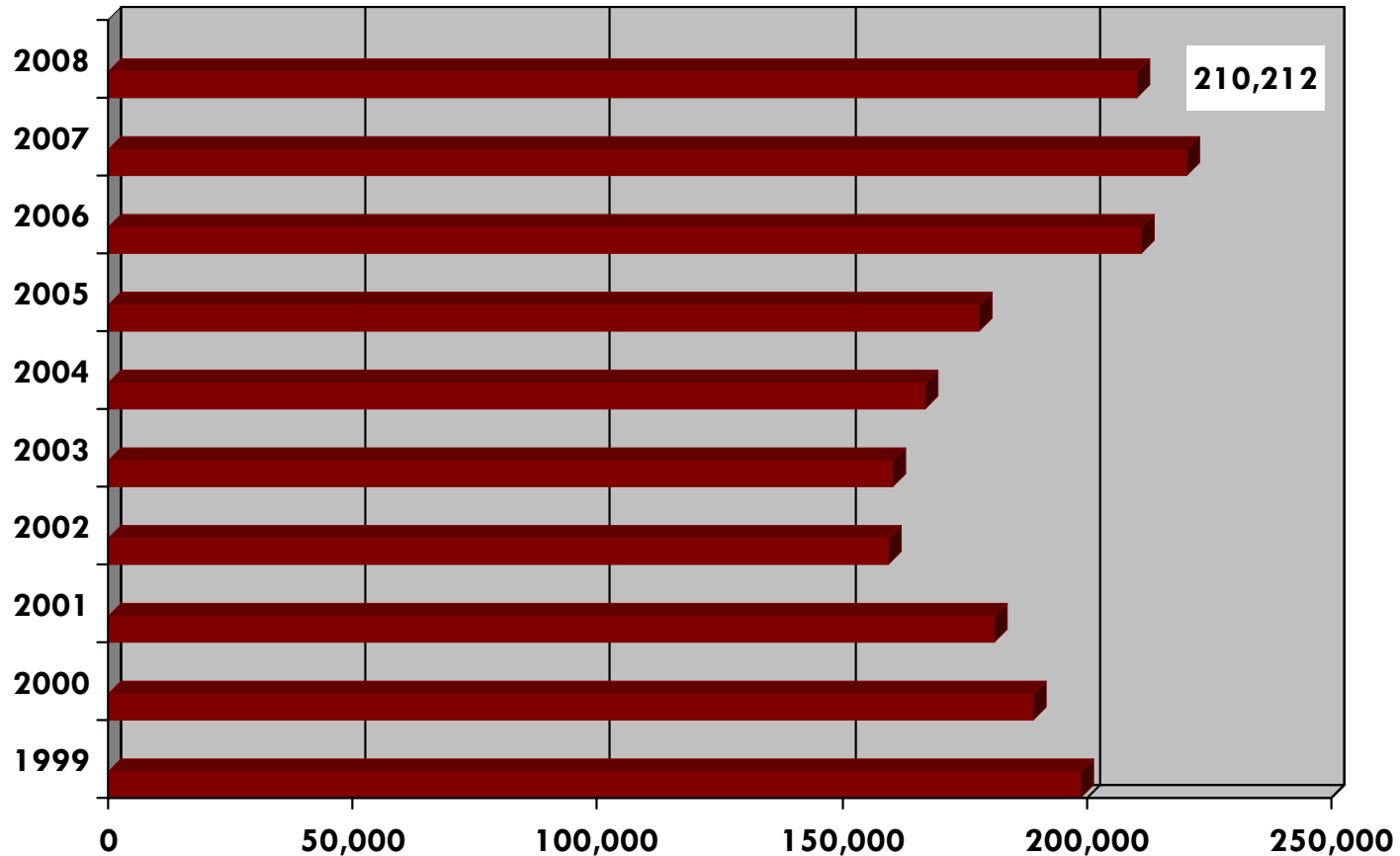
2008 total retail sales were 2.99% greater than 2007.

Lafayette's total annual retail sales in 2008 were more than \$5 billion for the third year in a row.

Source: Lafayette Parish School Board

Note: 2008 annual total is \$157,655,803 more than the 2007 annual total.

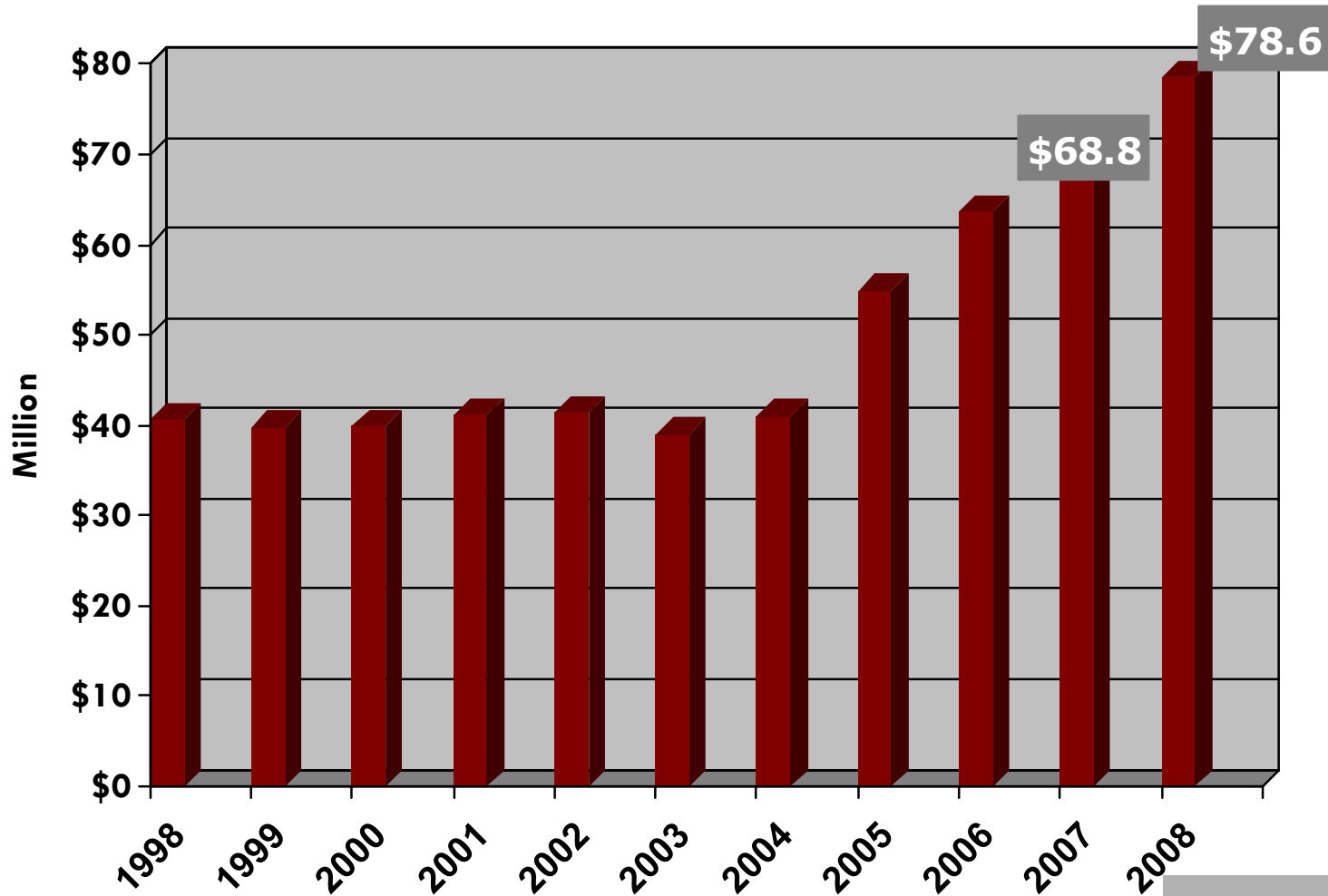
# Annual Airline Boardings



Source: Lafayette Regional Airport

Note: The total for 2008 is 10,425 less than in 2007.

# Hotel & Motel Receipts



Source: Lafayette Parish School Board

Note: 2008 total is \$9,728,076 more than the 2007 total.

Hotel/Motel tax is collected at a rate of 4%

# Employment Sectors

Industry	LAF	LA	US
Mining	11.7%	2.9%	0.60%
Construction	4.5%	7.2%	4.8%
Manufacturing	6.5%	7.7%	9.5%
Transportation	2.9%	4.3%	3.3%
Wholesale trade	5.1%	3.8%	4.8%
Retail trade	11.5%	11.5%	11.2%
Information	2.1%	1.4%	2.2%
F.I.RE*	5.7%	4.9%	6.0%
Health Care	12.7%	11.6%	12.1%
Leisure/Hosp.	9.7%	10.1%	9.7%
Services	16.3%	15.9%	19.2%
Government	11.0%	18.9%	16.8%

Source: Louisiana Workforce Commission. The data is representative of January.

Note: 19.6% of the workforce in the Lafayette MSA is a combination of Mining, Manufacturing and Information.

\*F.I.RE represents Finance, Insurance and Real Estate

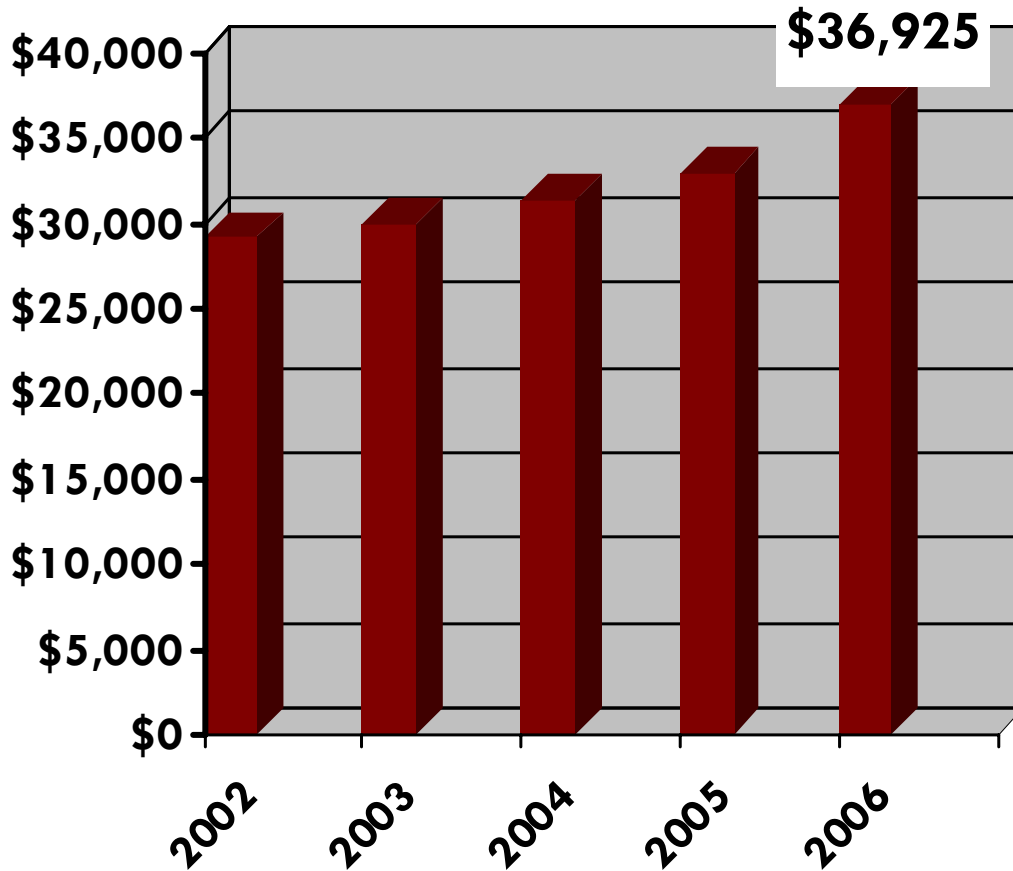
# Unemployment

Month	Rate
February 08	2.5%
March 08	3.1%
April 08	2.5%
May 08	2.7%
June 08	3.6%
July 08	2.9%
August 08	3.4%
September 08	3.2%
October 08	3.6%
November 08	3.4%
December 08	3.6%
January 09	3.7%

Lafayette Parish saw unemployment rates of less than 3% four times in the last twelve months.

A recently released forecast by economist Loren Scott predicts job growth in Lafayette to add 6,000 new jobs over the next two years.

# Per Capita Income



Top 9% of all counties in the US (276 out of 3111 counties).

Lafayette's PCI increased 84% in the last 10 years.  
LA up 61% and US up 52%.

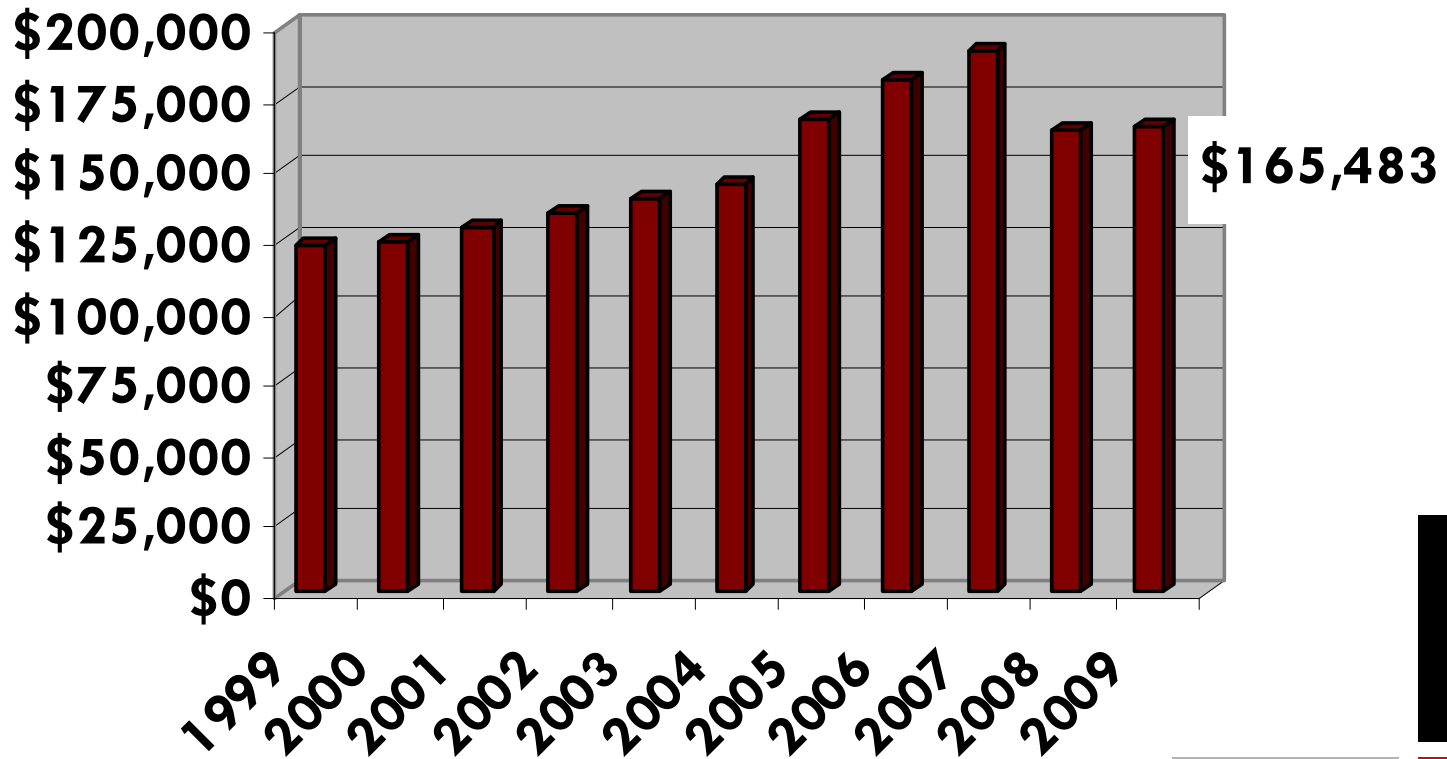
Source: Bureau of Economic Analysis

Note: Lafayette Parish has third highest PCI in the state.

Top 5: St. Bernard, Orleans, Lafayette, Jefferson & St. Tammany

# Average Annual Sales Price

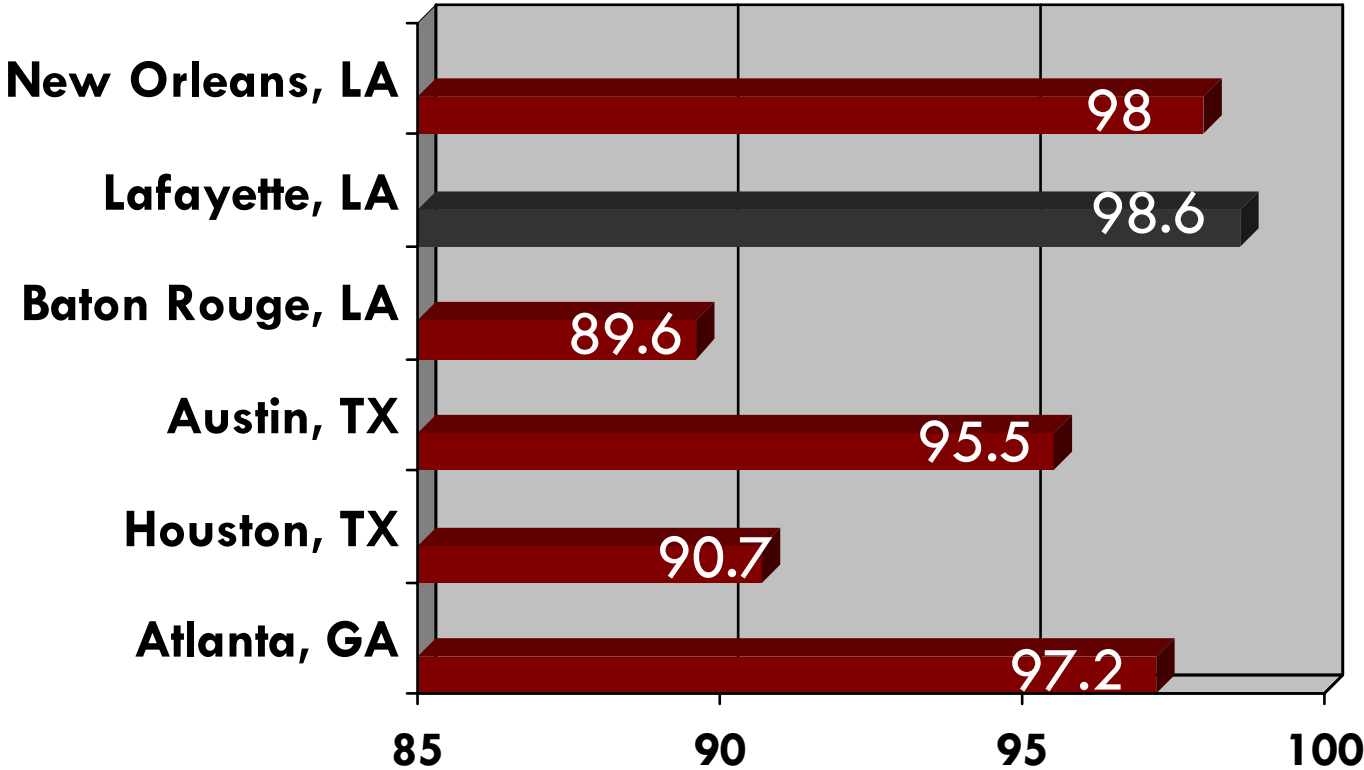
For A Single Family Residential Home



Source: Lafayette Board of Realtors

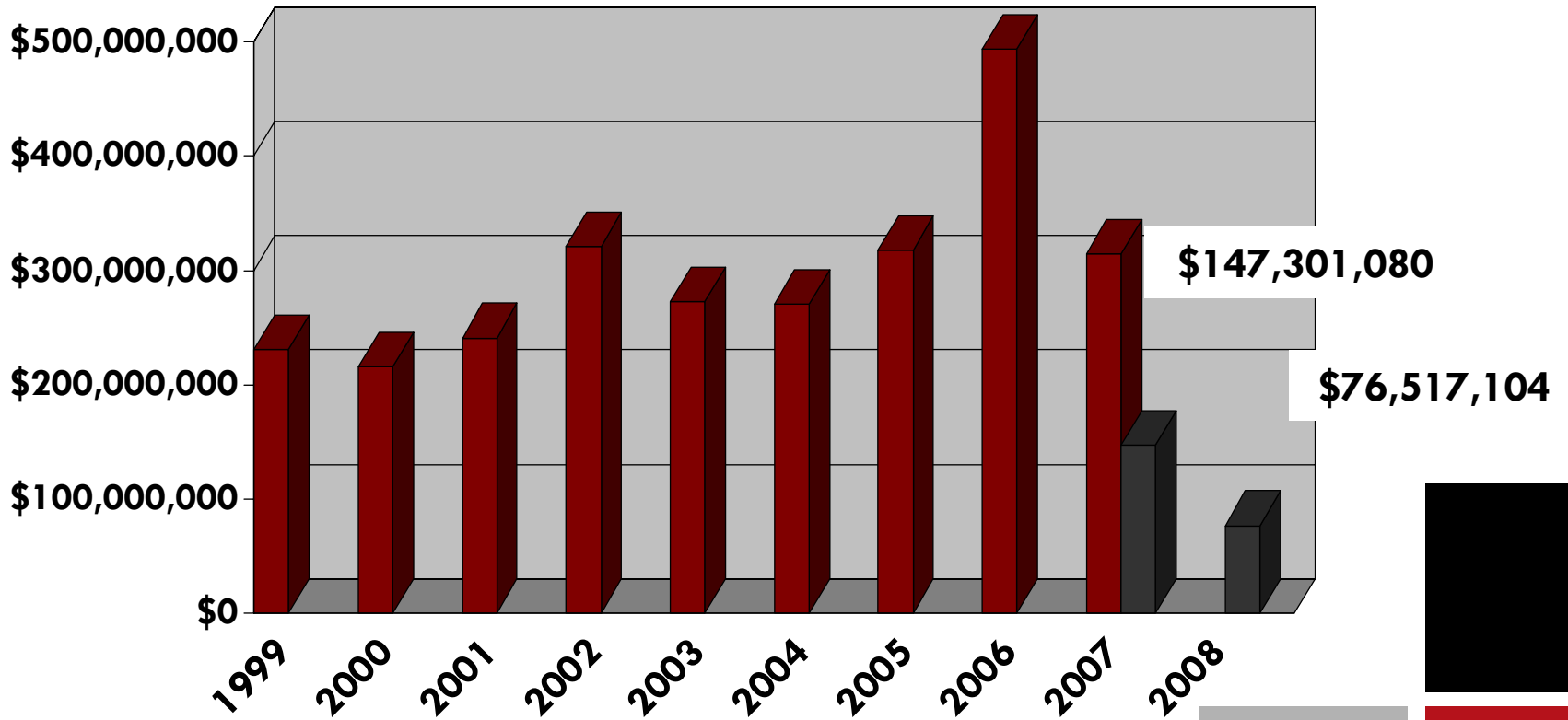
Note: The average for 2008 \$27,496 less than the average for 2007.

# Cost of Living



Source: ACCRA Cost of Living Index; 2008 Average  
Note: Data represents Lafayette Parish.  
Data is based on an index where 100 is the national average.

# Construction Valuation



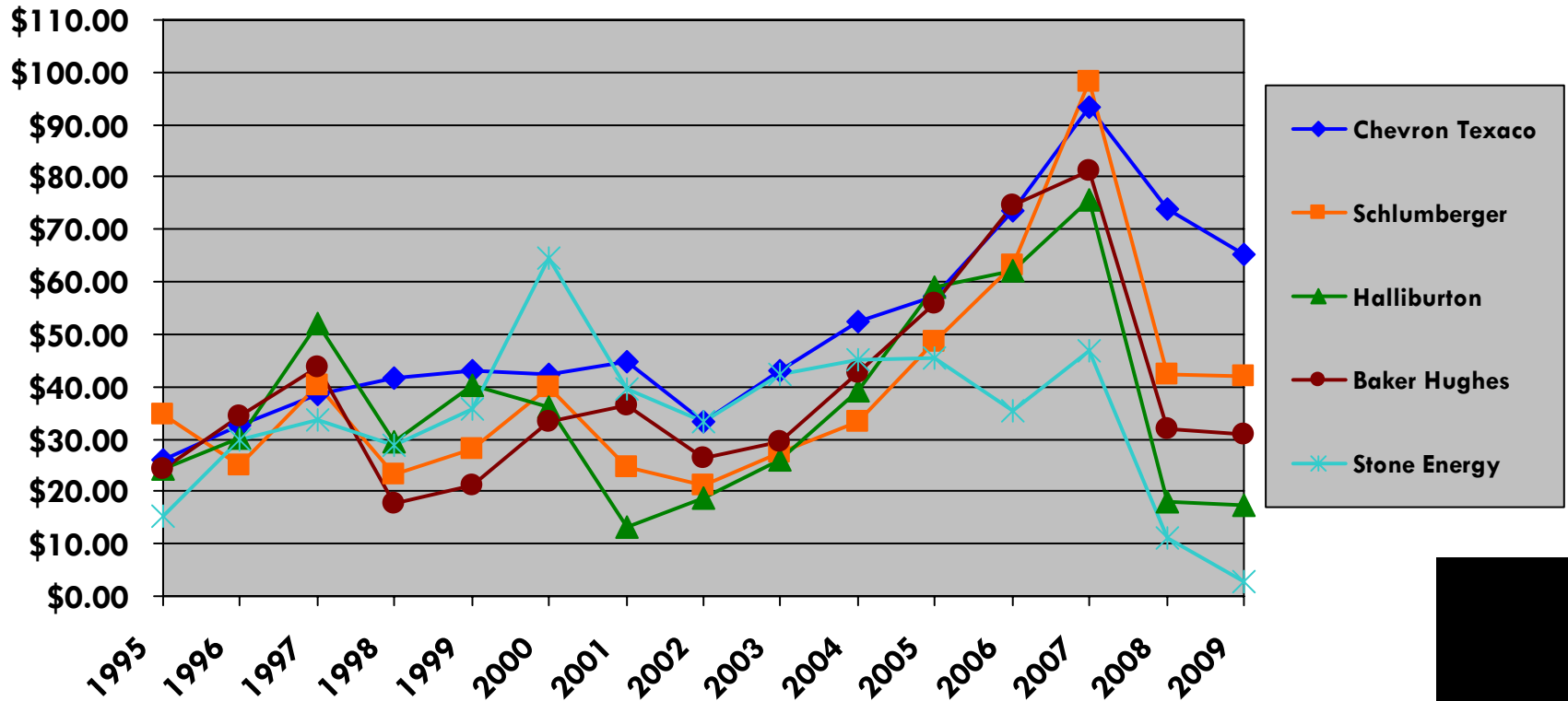
Source: Lafayette Parish Codes Division

Note: Information is based on the LCG's fiscal year ending October 31st.

The year-to-date total for the 2008-09 fiscal year is \$70,783,976 less than the total for the same time period for the 2007-2008 fiscal year.

# Year-end Stock Prices

for Selected Oilfield Companies



Source: Bigcharts.com

Note: 2009 data represents closing stock prices as of 3/17/09

Split History:

Chevron Texaco, 2:1 split in August of 2004, merger with Unocal August 2005

Schlumberger, 2:1 split in June of 1997, 2:1 split April 10, 2006

Halliburton, 2:1 split in July of 1997, 2:1 split in June 06



To view this presentation online, visit [www.lafayette.org/presentations](http://www.lafayette.org/presentations).